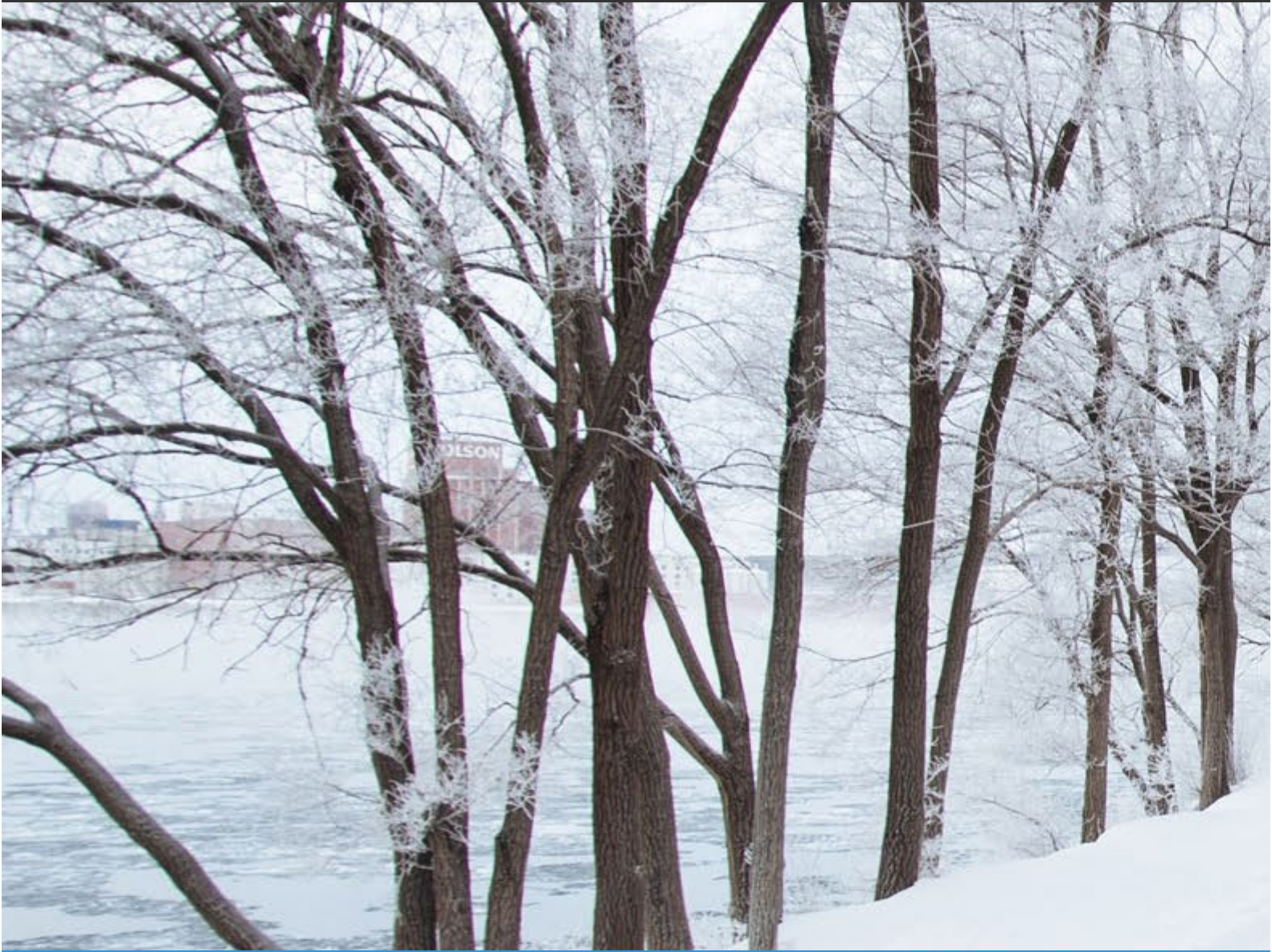


Inspiring faith in our youth. Support the Pentecost Offering.

Logo



[Make A Donation](#) [Click Here >](#)

Climate change

Food Issues

Transportation

Energy

Personal Lifestyle Changes

Church Policies

Home > Sustainable Living & Earth Care Concerns > Environmental Issues > Climate change

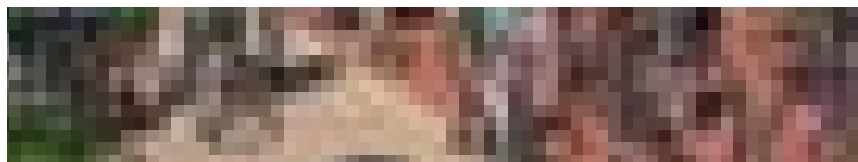
Climate change

God created the earth, and it is sacred. As Psalm 24:1 proclaims, "The earth is the Lord's, and all that is in it." Therefore we are called to stewardship of the earth. When we work to protect creation, we are answering God's call to till and keep the garden (Genesis 2:15). In the face of deepening ecological crises caused by the earth's warming, our call to act as earth's caretakers takes on more meaning. Our efforts will curtail the shrinking of sacred waters, the endangerment of living creatures of every kind, and the vulnerability of our brothers and sisters in developing countries.

The Union of Concerned Scientists has identified food, transportation, and energy as the three key personal areas that need action to help stem climate change. Browse the tabs across the top of this page to find links to learn more about these issues, get ideas on how to take action, and access theological reflections below in order to help your congregation care for God's creation.

[RECENT resources and ways to take action on climate on our blog!](#)

View and share this new 2019 video from PC(USA) on our call to care for God's creation especially in a time of climate change.



Give Now

Restoring Creation For Ecology & Justice

Learn More

Solar



Climate Change



Environmental Racism & Justice



Water



The Collaborative Agenda



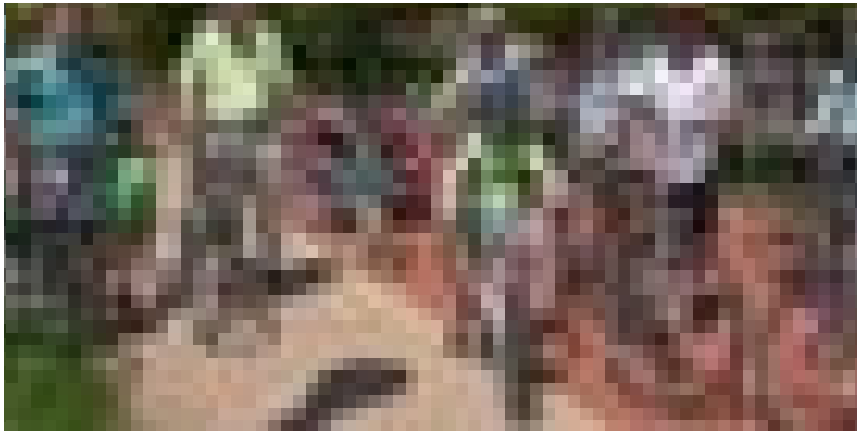
Blessed Tomorrow



Follow PC(USA)



Follow Environmental



Issues



Presbyterian Justice and Peace Newsletter

News and information about the church's work on such issues as the environment, hunger and food, child advocacy, human rights, responsible investing, world peace, disaster assistance, development and grants, domestic/international public witness and social welfare. | Delivered twice monthly

[Sign Me Up](#)





“If you love me, you will keep my commandments.” — John 14:15

[Contact Us](#)

Logo



PC(USA) Agencies

[PC\(USA\) Home](#)

[Board of Pensions](#)

[Office of the General Assembly](#)

[PC\(USA\) Foundation](#)

[Presbyterian Investment & Loan Program](#)

[Presbyterian Mission Agency](#)

[Presbyterian Publishing Corporation](#)

[Presbyterian Women](#)

[Presbyterian Church \(U.S.A.\) A Corp](#)

Connect With Us:



Mission & Ministry

[What We Believe](#)

[What We Do](#)

[Who We Are](#)

[Mission Resources](#)

[Get Involved](#)

Tools

[News & Communications](#)

[Programs & Services](#)

[PC\(USA\) Store](#)

[Work for the Church](#)

[Sexual Misconduct Reports](#)

Español

한국어

Log In/Sign Up

Contact Us

© 2020 Presbyterian Mission Agency [Privacy Policy](#) | [GDPR Privacy Policy](#) | [Legal Notices](#)